

# SOUTH EDMONTON SKYLINE

38.85 Acres SE Edmonton



38.85 Acres ... 41 Ave SW



## SOUTH EDMONTON SKYLINE

*Acres:* 38.85 Acres

*Price:* \$3,850,000

*Price/Acre:* \$99,099 /Acre

*Features:*

- *Inside Edmonton !!*

- ***Own a piece of South Edmonton's booming future!*** We're offering a unique opportunity to acquire strategically located land **with immense potential.**

- ***Prime Location:*** Situated in the heart of South Edmonton, this land enjoys close proximity to jobs, shopping, nature, and everything you need for a thriving lifestyle.

- ***Explosive Growth:*** South Edmonton is experiencing **phenomenal growth**, making this an ideal time to invest in its future.

- ***Appreciating Value:*** As the planning phase advances towards development, the value of this land is poised to **significantly appreciate.**

- ***Don't miss out!*** Secure your stake in Edmonton's exciting future and contact us today to learn more about this exclusive land offering.



Edmonton boundary

QE2 HIGHWAY

**SOLD 2022**  
39.04 Acres  
\$115,178/Acre

**2019 SOLD TO DEVELOPER**  
\$81,288/Acre

Site

Site

Edmonton boundary

BEAUMONT



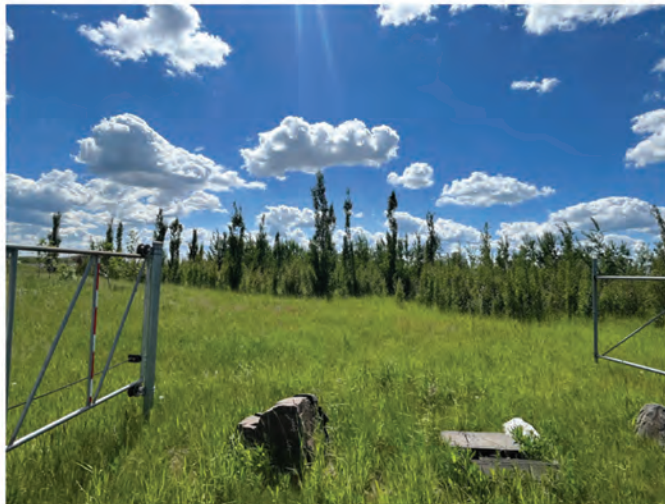
Township Rd 512  
41 Avenue SW

Site

Site



[KelleyUrbanLand.com](http://KelleyUrbanLand.com)



[Dylan@KelleyUrbanLand.com](mailto:Dylan@KelleyUrbanLand.com)  
Tel: (780) 488-4000





[KelleyUrbanLand.com](http://KelleyUrbanLand.com)



[Dylan@KelleyUrbanLand.com](mailto:Dylan@KelleyUrbanLand.com)  
Tel: (780) 488-4000



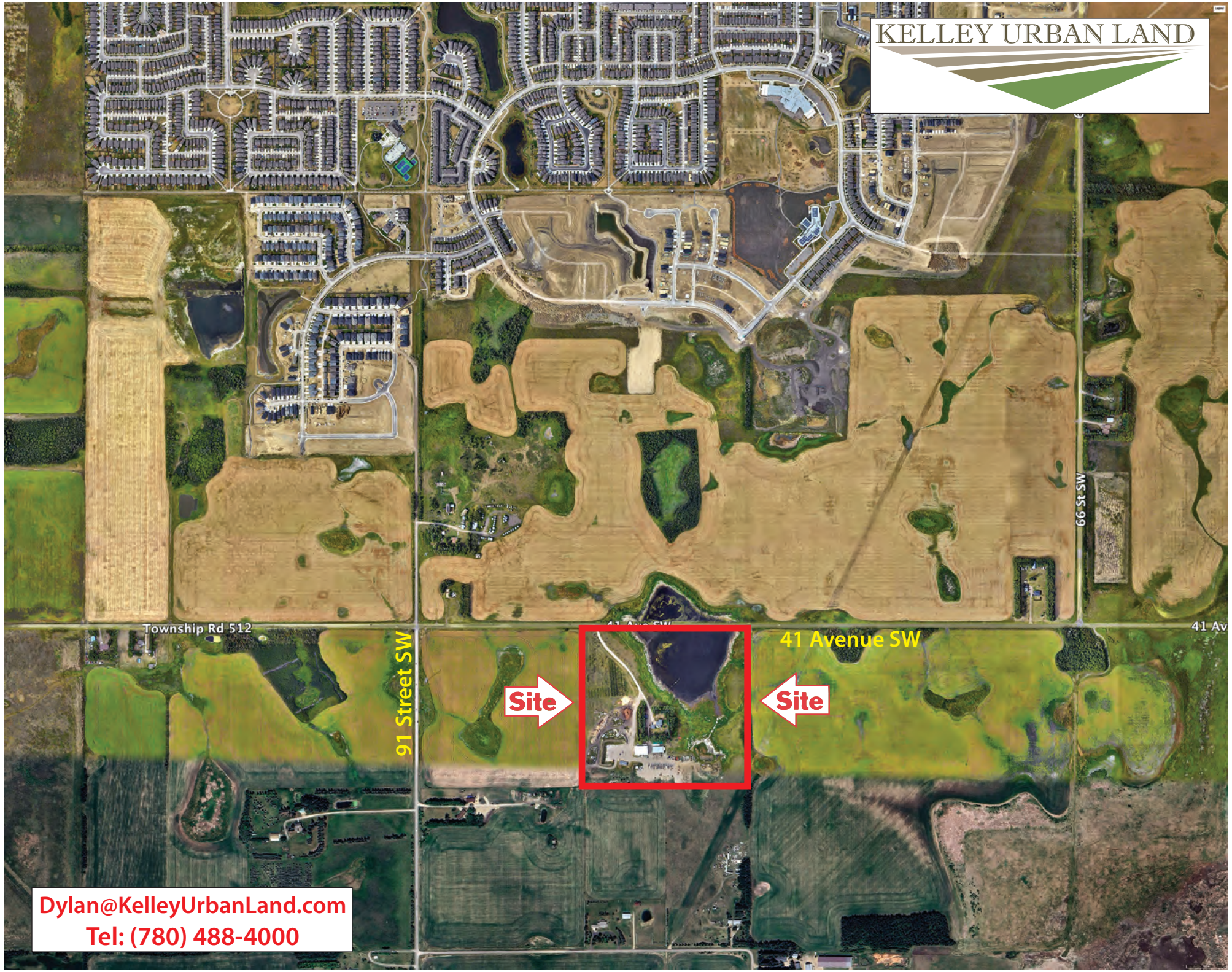


[KelleyUrbanLand.com](http://KelleyUrbanLand.com)



[Dylan@KelleyUrbanLand.com](mailto:Dylan@KelleyUrbanLand.com)  
Tel: (780) 488-4000





Township Rd 512

91 Street SW

Site

41 Avenue SW

Site

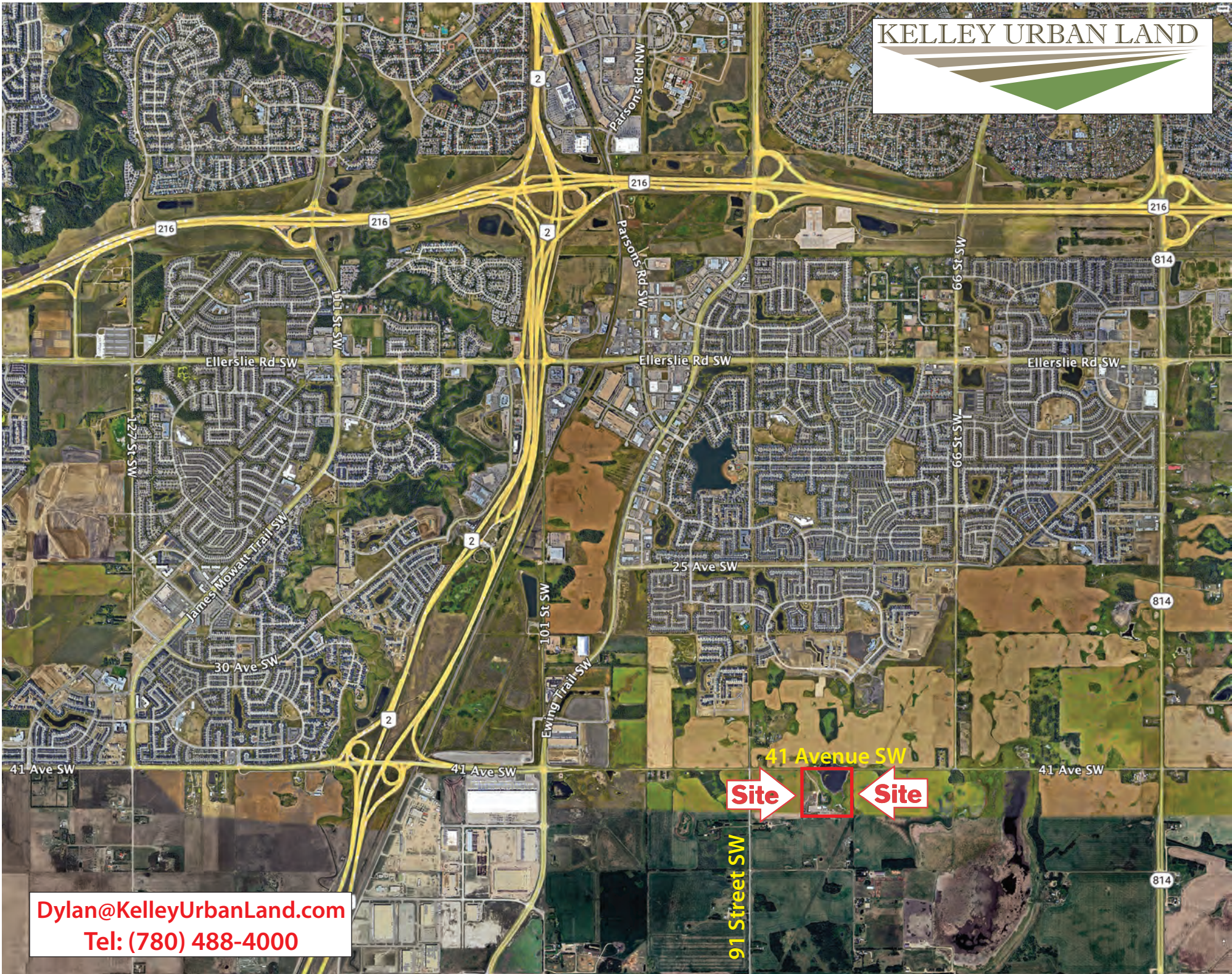
41 Av

66 St SW

[Dylan@KelleyUrbanLand.com](mailto:Dylan@KelleyUrbanLand.com)  
Tel: (780) 488-4000



# KELLEY URBAN LAND



[Dylan@KelleyUrbanLand.com](mailto:Dylan@KelleyUrbanLand.com)  
Tel: (780) 488-4000

91 Street SW

Site

Site