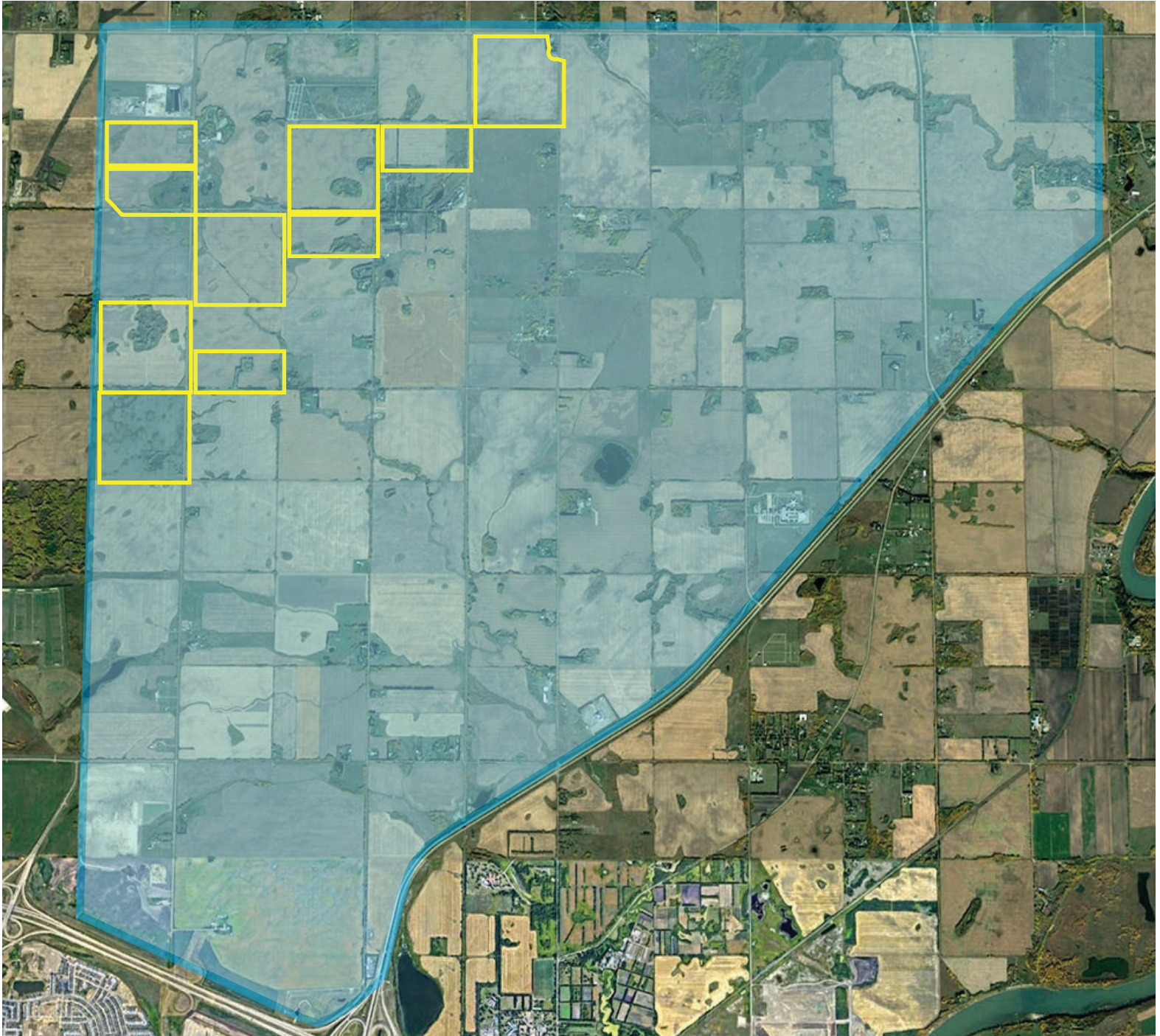




EDMONTON INDUSTRIAL PARK

1,164.42 ACRES NE EDMONTON



Edmonton & Energy & Technology Park

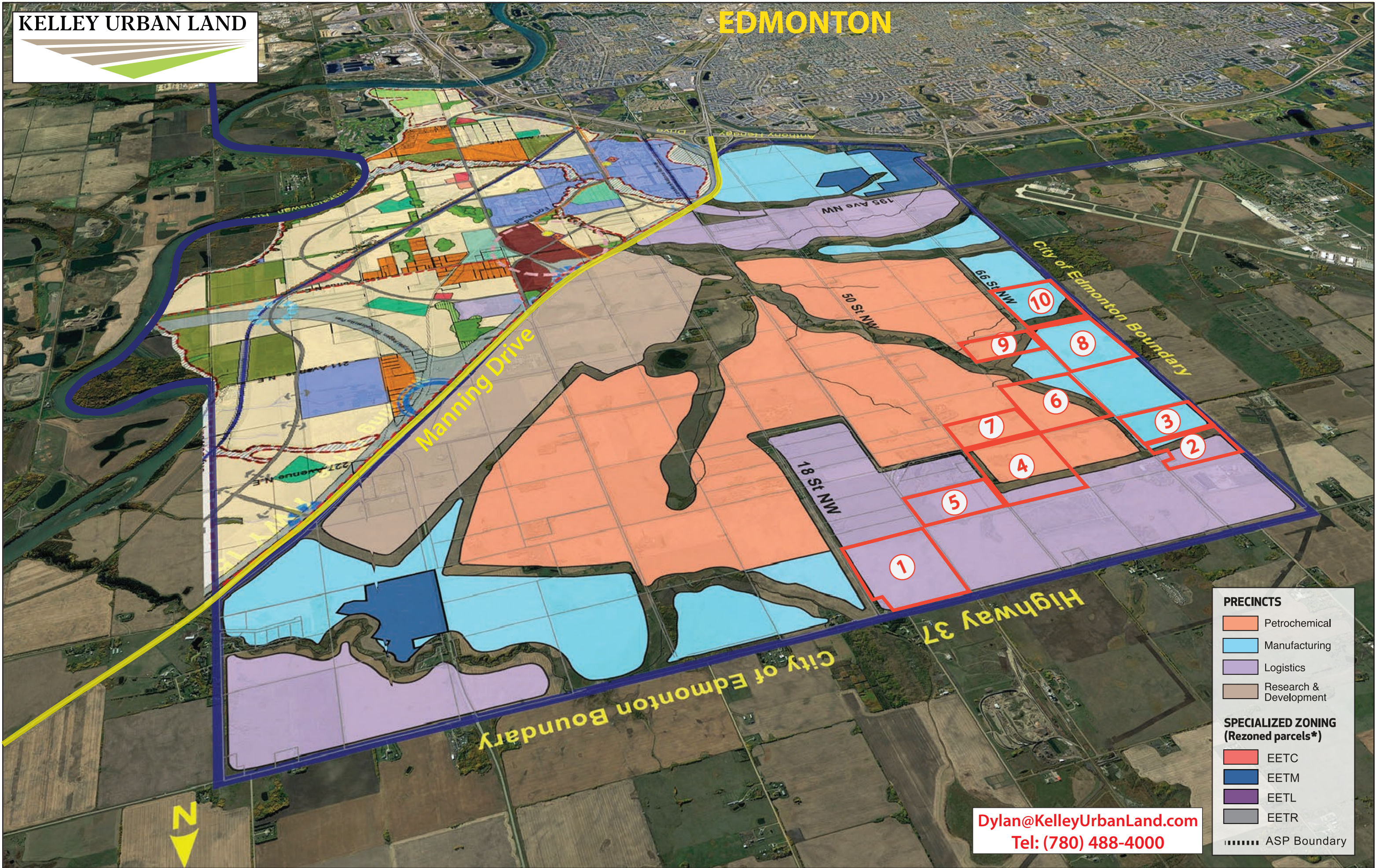


KelleyUrbanLand.com

FEATURES

- Average Daily Traffic of 98,000 Vehicles in 2019!!
- Great for Trucking Company, RV Sales, Light Industrial and Development
- Great Potential ... Great Investment in Alberta and in Edmonton!
- Excellent Visibility!





PRECINCTS

- Petrochemical
- Manufacturing
- Logistics
- Research & Development

SPECIALIZED ZONING (Rezoned parcels*)

- EETC
- EETM
- EETL
- EETR
- ASP Boundary

Dylan@KelleyUrbanLand.com
Tel: (780) 488-4000

KELLEY URBAN LAND

Edmonton Industrial Park

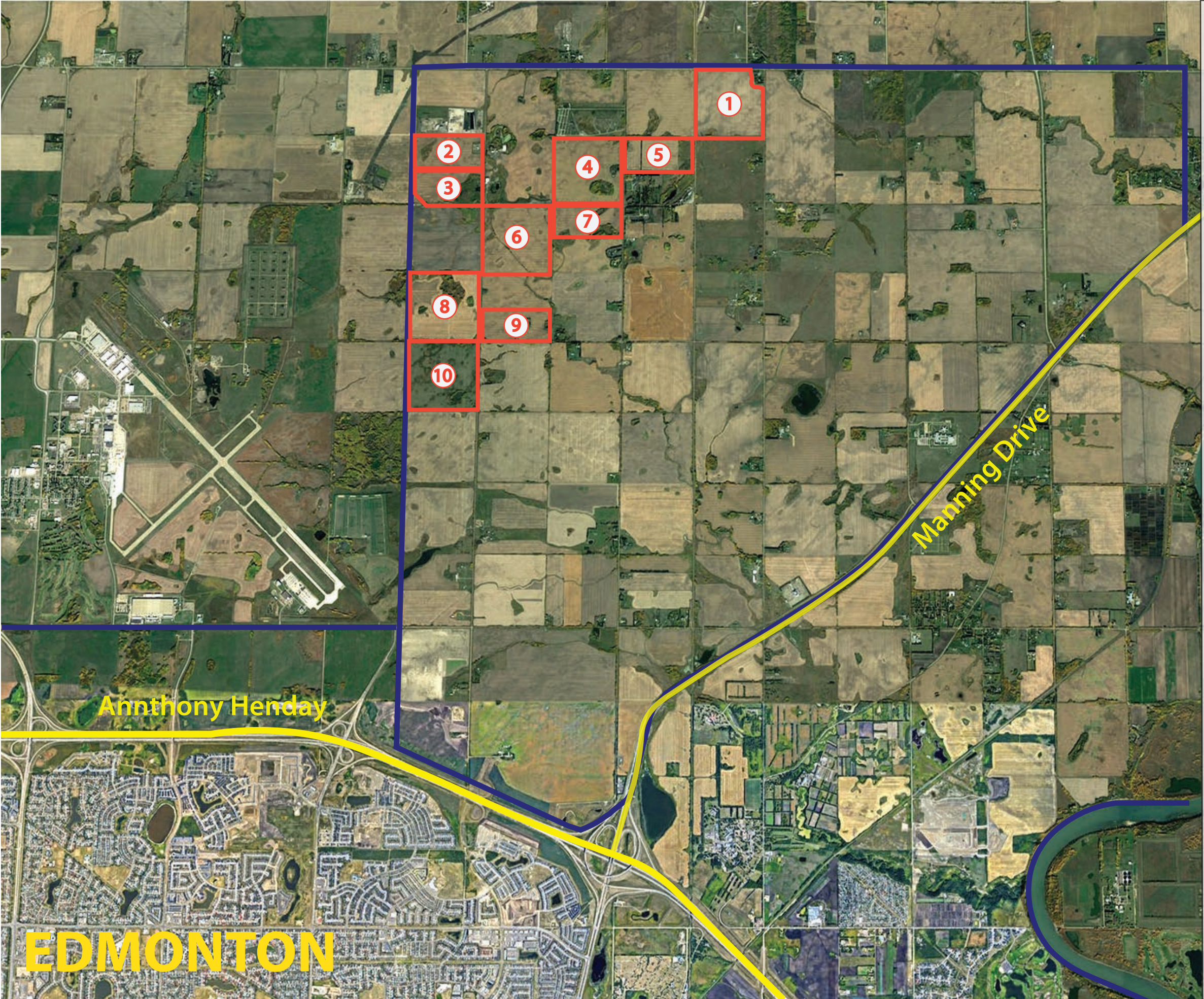
10 Listings, 1,164.42 Acres in E.E.T.P !!

- ACRES:**
- ① 145.56 Acres
 - ② 75.5 Acres
 - ③ 79.5 Acres
 - ④ 160 Acres
 - ⑤ 80.06 Acres
 - ⑥ 152.58 Acres
 - ⑦ 73.9 Acres
 - ⑧ 159 Acres
 - ⑨ 79.32 Acres
 - ⑩ 159 Acres

1,164.42 Acres

Total Price: Market Price

Dylan@KelleyUrbanLand.com
Tel: (780) 488-4000







EDMONTON

Anthony Henday

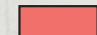


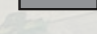

Manning Drive

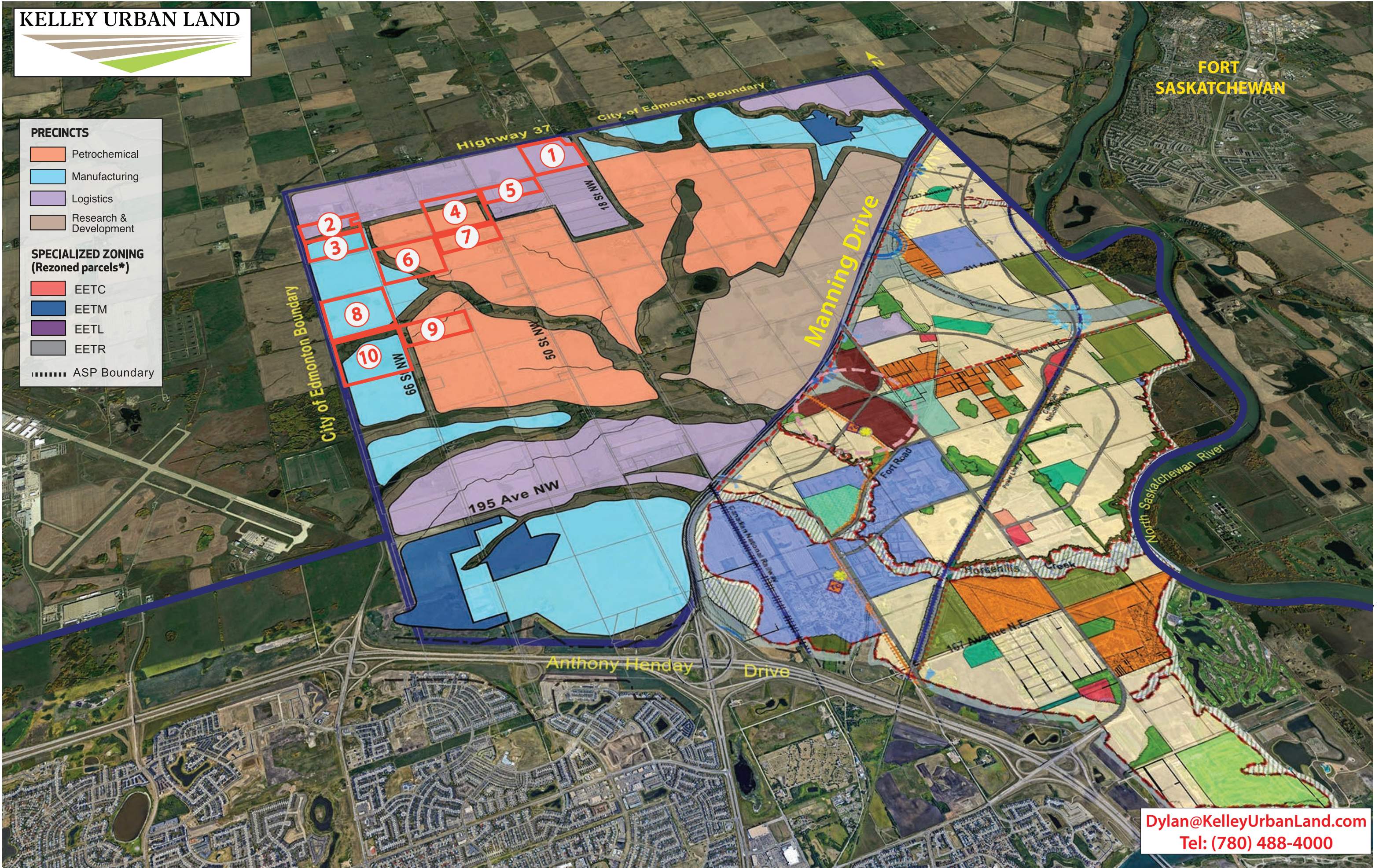
KELLEY URBAN LAND

PRECINCTS

-  Petrochemical
-  Manufacturing
-  Logistics
-  Research & Development

SPECIALIZED ZONING (Rezoned parcels*)

-  EETC
-  EETM
-  EETL
-  EETR
-  ASP Boundary



Dylan@KelleyUrbanLand.com
Tel: (780) 488-4000

KELLEY URBAN LAND



Fort McMurray
4 hours away

Alberta's Industrial
Heartland 28
minutes away

Sturgeon Industrial
Park 5 minutes away

- 1
- 2
- 3
- 4
- 5
- 6
- 7
- 8
- 9
- 10

EDMONTON ENERGY AND TECHNOLOGY INDUSTRIAL PARK

HORSE HILL

Dylan@KelleyUrbanLand.com
Tel: (780) 488-4000

