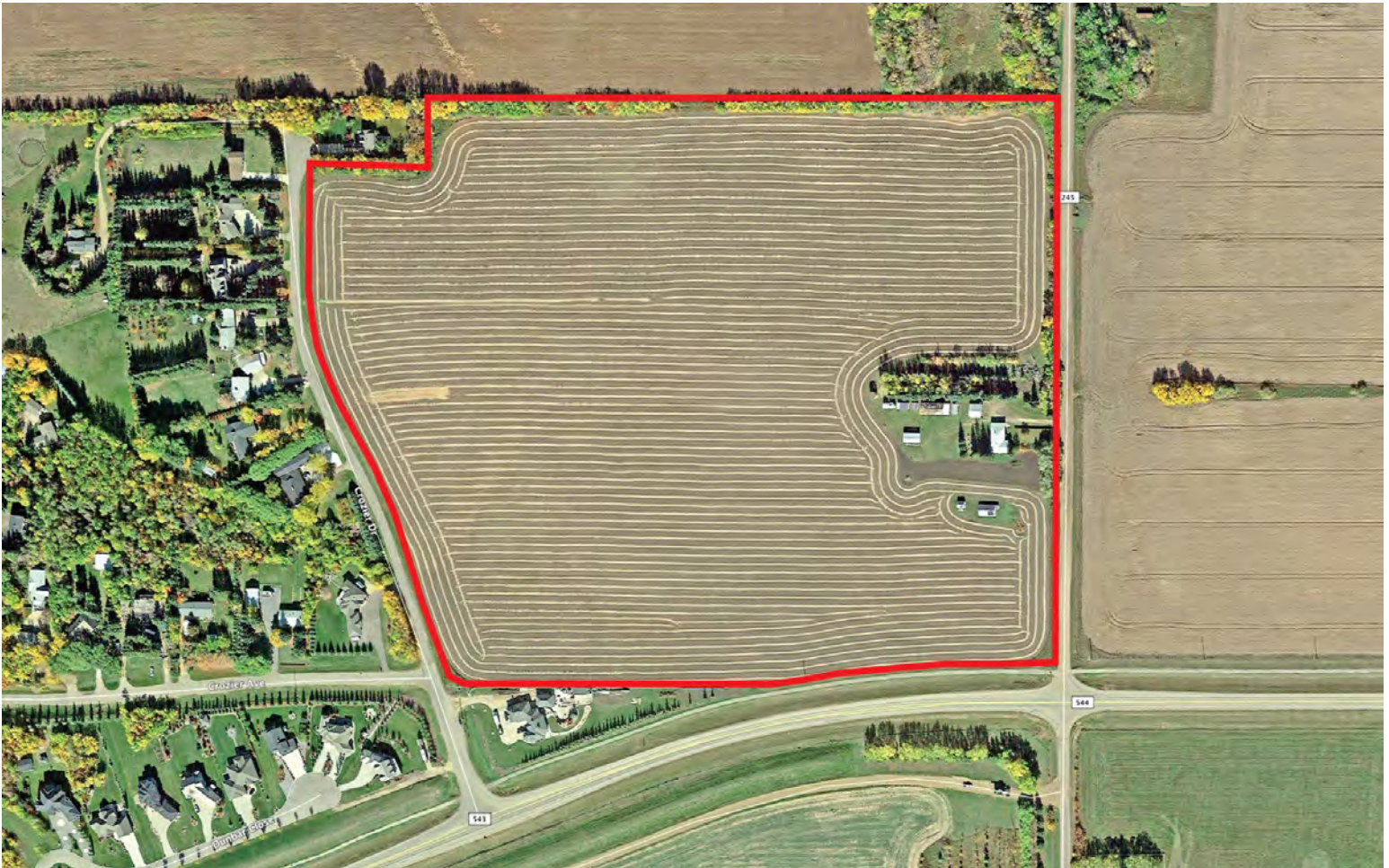


COPPERSTONE ROAD

46.52 Acres NW Edmonton



100_2592_10.jpg



COPPERSTONE ROAD

Acres: 46.52

Price: \$2,700,000

Price/Acre: \$58,040

- Features:*
- *This 46.52 Acres sits next to clusters of \$1-2 Million Dollar Homes & Custom Designer country Mansions !!*
 - *St. Albert is a scenic 5 minute drive.*
 - *This location has some of the best access from the neighbourhood to Major Transportation arteries, Anthony Henday and HWY 28 for a quick commute to grocery, major retail and offices !*
 - *Water and Sanitary Lines nearby !!*
 - *Future Edmonton Annexation Likely !!*



The Land ...

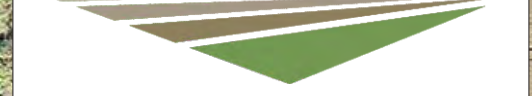
KelleyUrbanLand.com



In the Neighborhood ...

KelleyUrbanLand.com

KELLEY URBAN LAND



245

544

543

Grozier Ave

Grozier Dr

Dylan@KelleyUrbanLand.com
Tel: (780) 488-4000

KelleyUrbanLand.com

