

RIVER WIND SOUTHWEST EDMONTON

80.98 Acres



Riverview A.S.P.



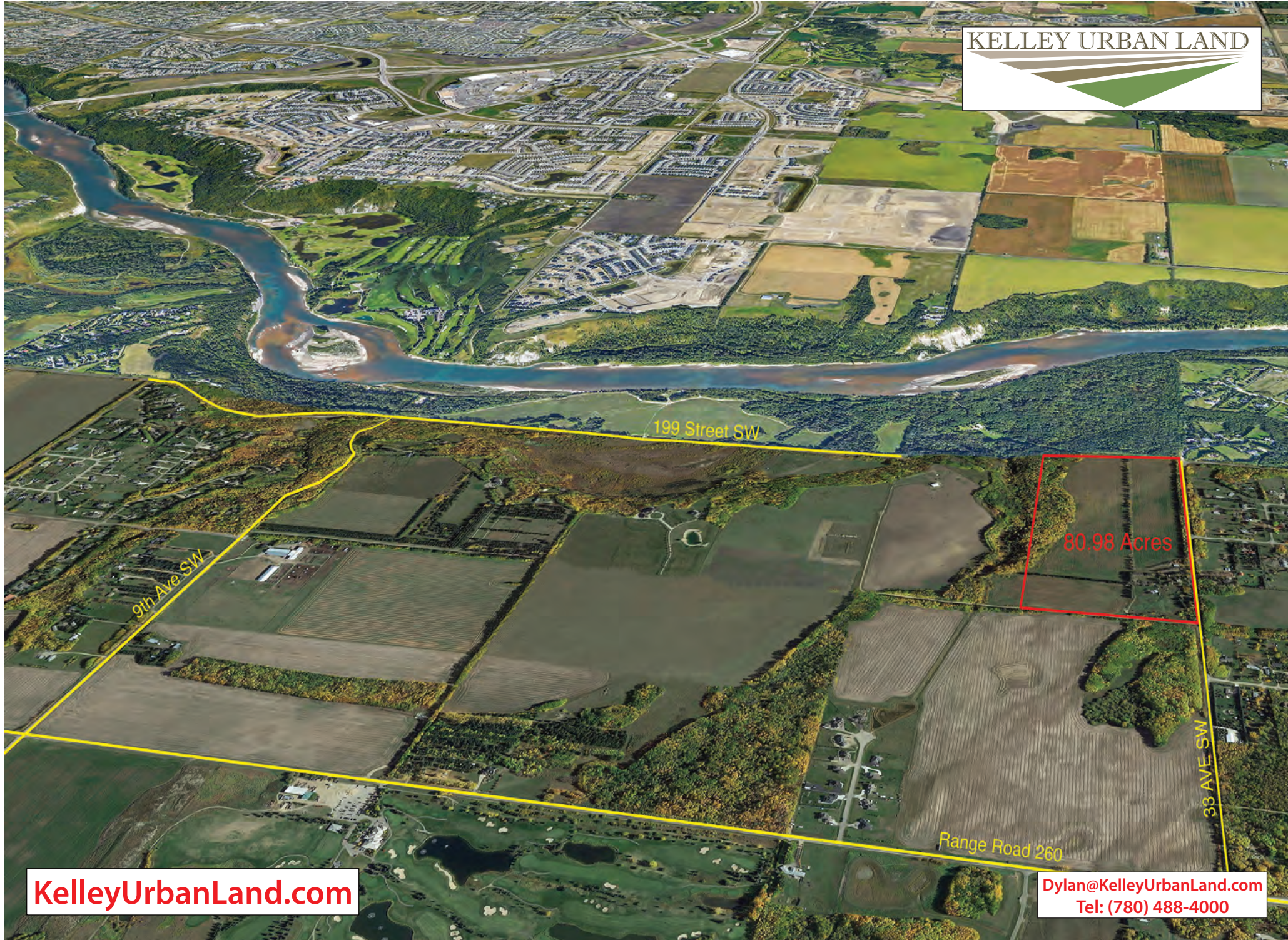
RIVER WIND 80.98

Acres: 80.98 Acres

Price: \$3,239,200

Price/Acre: \$40,000/ACRE

- Features:*
- Inside Edmonton !!*
 - Inside Riverview Area Structure Plan !!*
 - Easy Access to Anthony Henday Ring Road !*
 - Development Approaching from the North ...
Residential Development in progress 2 ½ miles
North !*
 - Gorgeous River Valley Setting creates a space where
you Want to Live !!*
 - Everyone Loves the Southwest !!*
 - Is a Saught After destination for Builders, Developers,
and Home Buyers ... continues to see Phenomenal
Growth !!*
 - May be a Possible Shortcut for Sewer / Water Services to
cross the river !*



199 Street SW

9th Ave SW

80.98 Acres

33 AVE SW

Range Road 260



80.98 Acres

KelleyUrbanLand.com

Dylan@KelleyUrbanLand.com
Tel: (780) 488-4000



Edmonton Municipal Boundary
215 STREET NW

EDGE MOUNT NEIGHBOURHOOD

THE UPLANDS

RIVER'S EDGE

STILLWATER

NORTH SASKATCHEWAN RIVER VALLEY

WINDERMERE

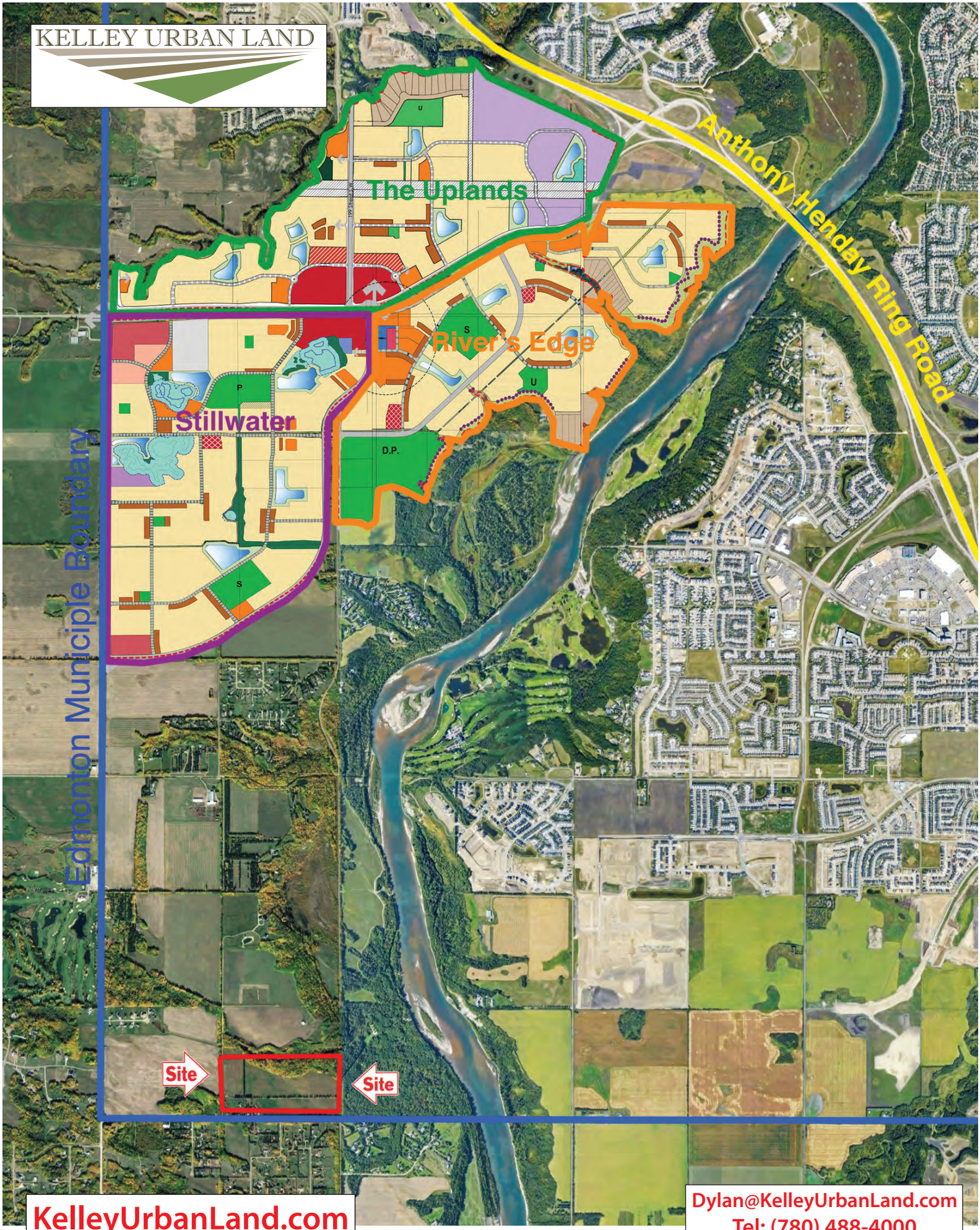
GRANDISLE

KESWICK

WHITE BIRCH

Site

Site



Edmonton Municipal Boundary

The Uplands

River's Edge

Stillwater

Anthony Henday Ring Road

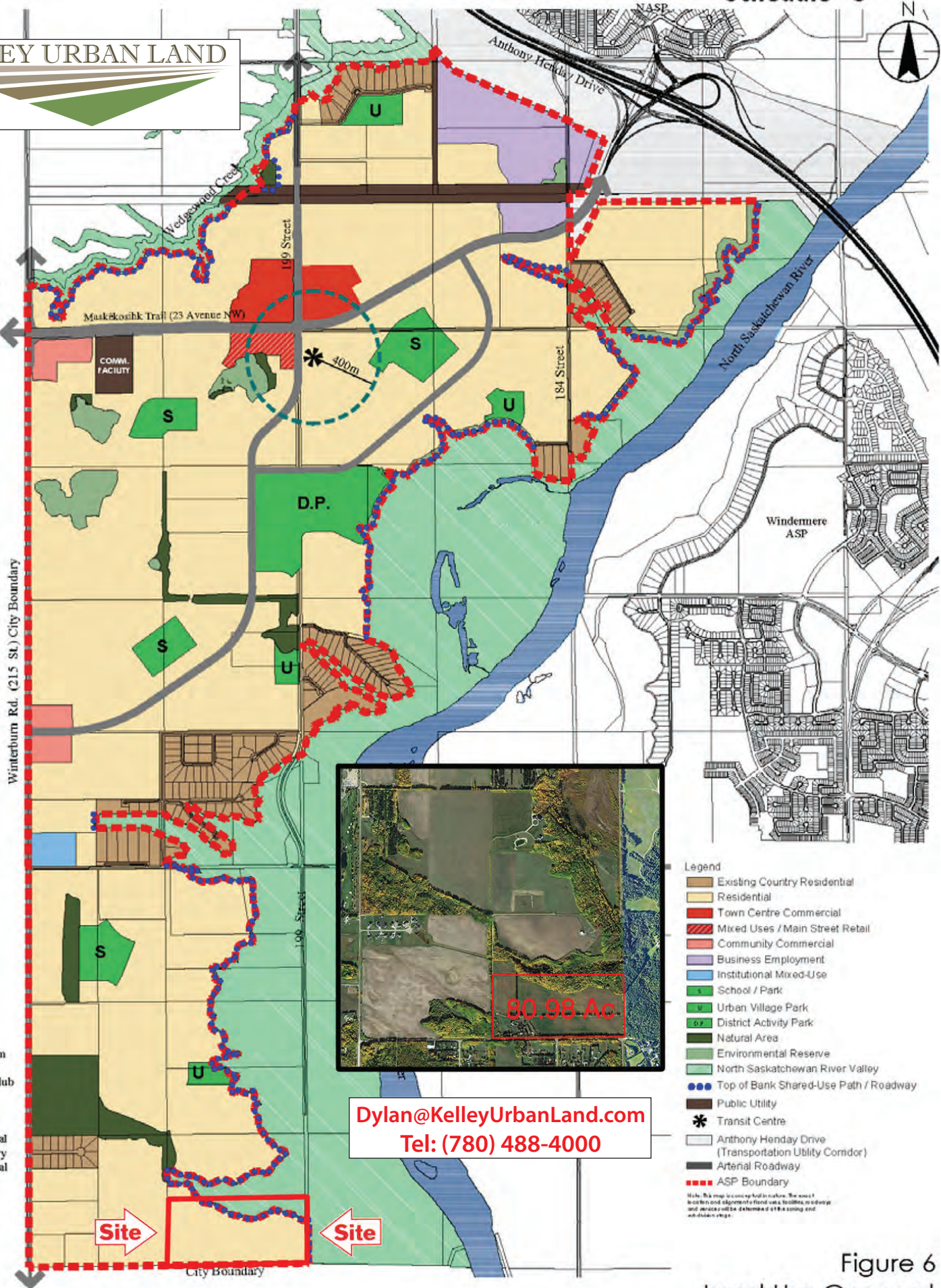
Site

Site

KELLEY URBAN LAND



Stony Plain
LR 135



Parkland
County

Winterburn Rd. (215 St.) City Boundary

Petroleum
Golf &
Country Club

Existing Rural
/ Country
Residential



Dylan@KelleyUrbanLand.com
Tel: (780) 488-4000

Site

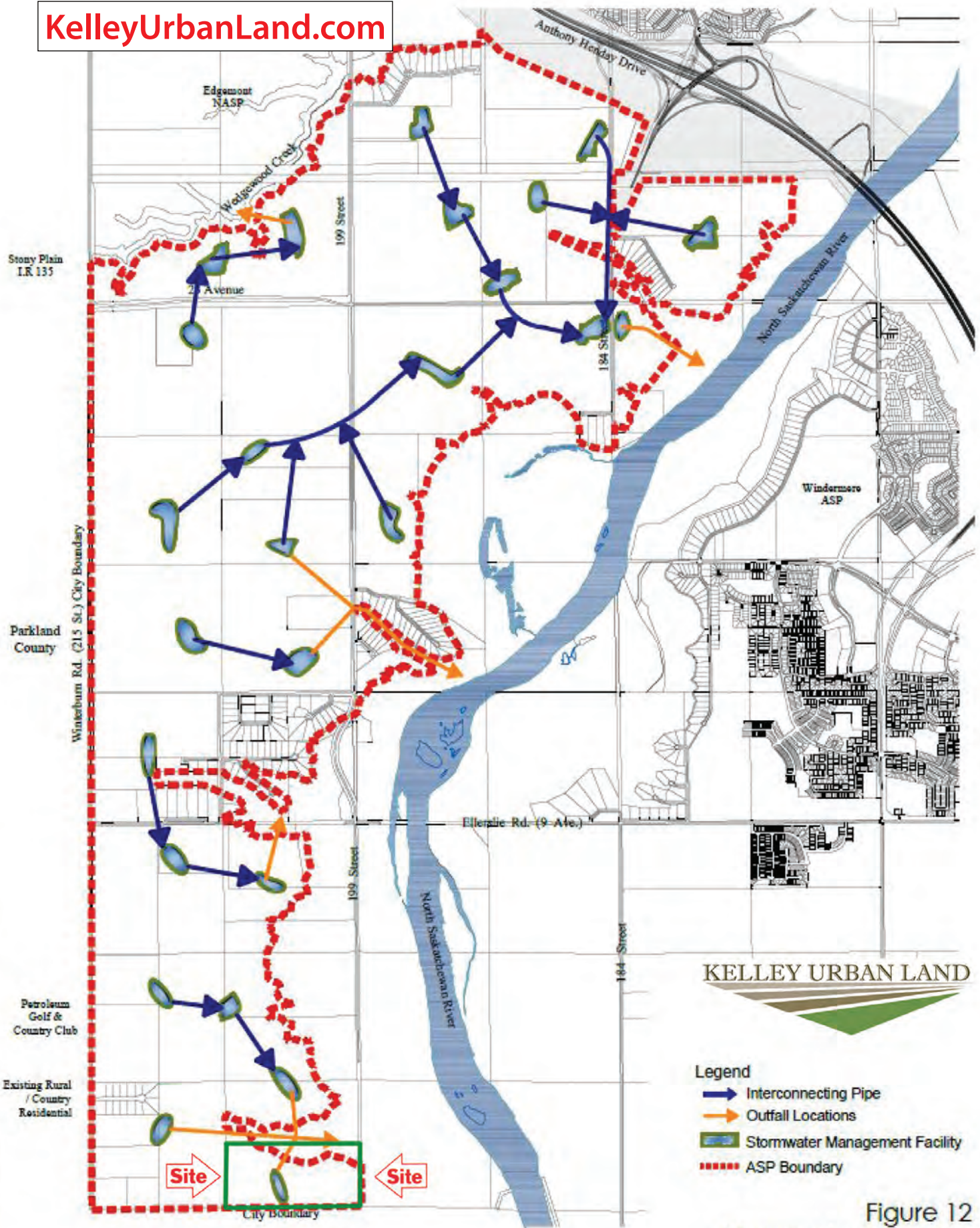
Site

Legend

- Existing Country Residential
- Residential
- Town Centre Commercial
- Mixed Uses / Main Street Retail
- Community Commercial
- Business Employment
- Institutional Mixed-Use
- School / Park
- Urban Village Park
- District Activity Park
- Natural Area
- Environmental Reserve
- North Saskatchewan River Valley
- Top of Bank Shared-Use Path / Roadway
- Public Utility
- Transit Centre
- Anthony Henday Drive (Transportation Utility Corridor)
- Arterial Roadway
- ASP Boundary

Note: This map is conceptual in nature. The exact location and alignment of roads, utilities, and other services will be determined at the zoning and subdivision stage.

W:\1161\locme\1161105700\drawing\mmodel_1161\planning\ASP_amend\river\view ASP Amend_15.aec2016.dwg
 2016/12/13 1:35 PM By: Clancalis, Kevin



KELLEY URBAN LAND

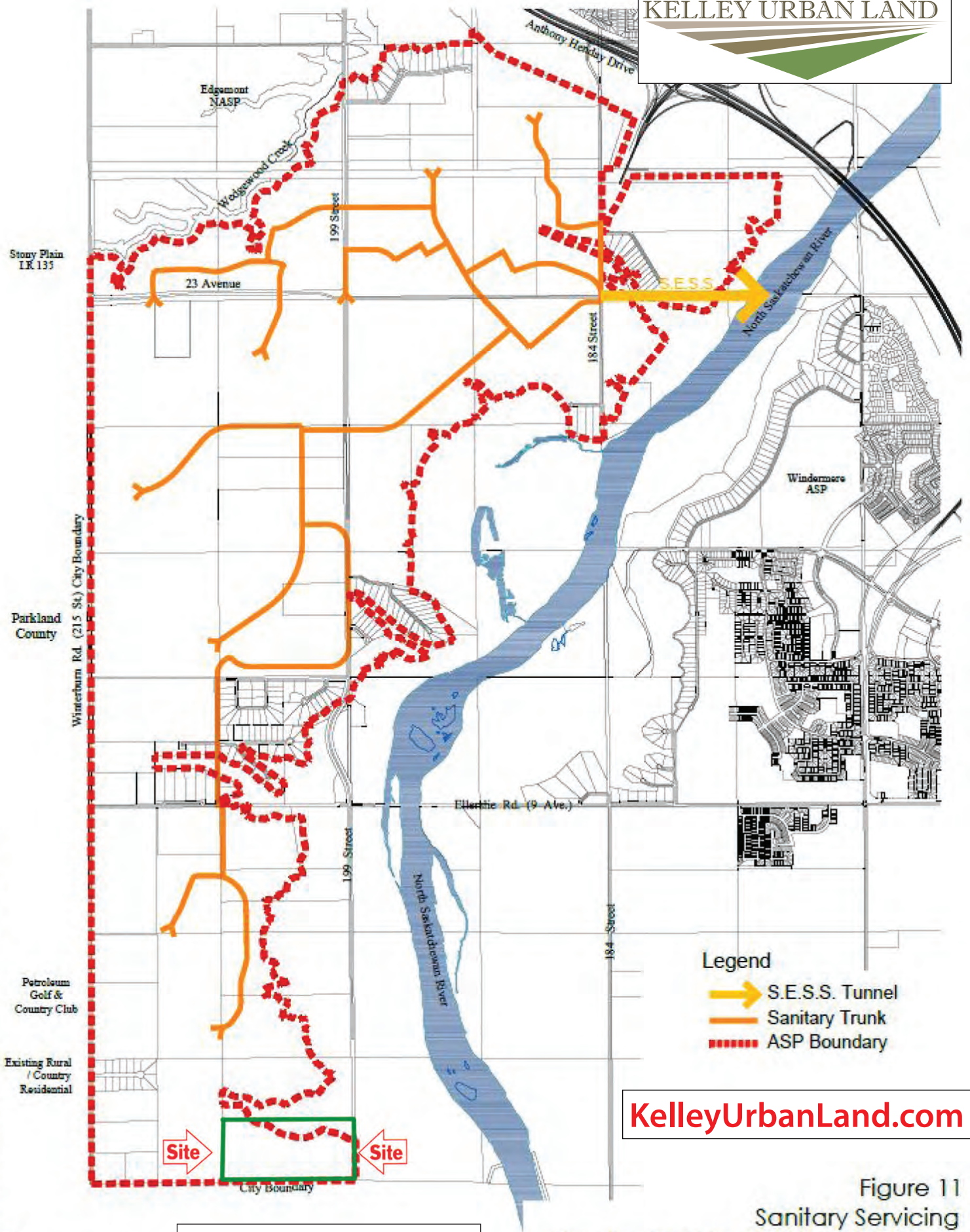
- Legend
- Interconnecting Pipe
 - Outfall Locations
 - Stormwater Management Facility
 - - - - ASP Boundary

Figure 12
Stormwater Servicing
Riverview Area Structure Plan Amendment
April 13, 2015 - 1161 102460.KC




Dylan@KelleyUrbanLand.com
Tel: (780) 488-4000



V:\1161\102460\working\stormwater\ASP_Amendment\Map_Notes_Land_Urban_Land\Stantec\ASP_Amendment\Map_Notes_Land_Urban_Land\20150413.dwg
 2015/04/13 9:29 AM By: dclarke@k.levin



Legend

-  S.E.S.S. Tunnel
-  Sanitary Trunk
-  ASP Boundary

KelleyUrbanLand.com

Figure 11
Sanitary Servicing

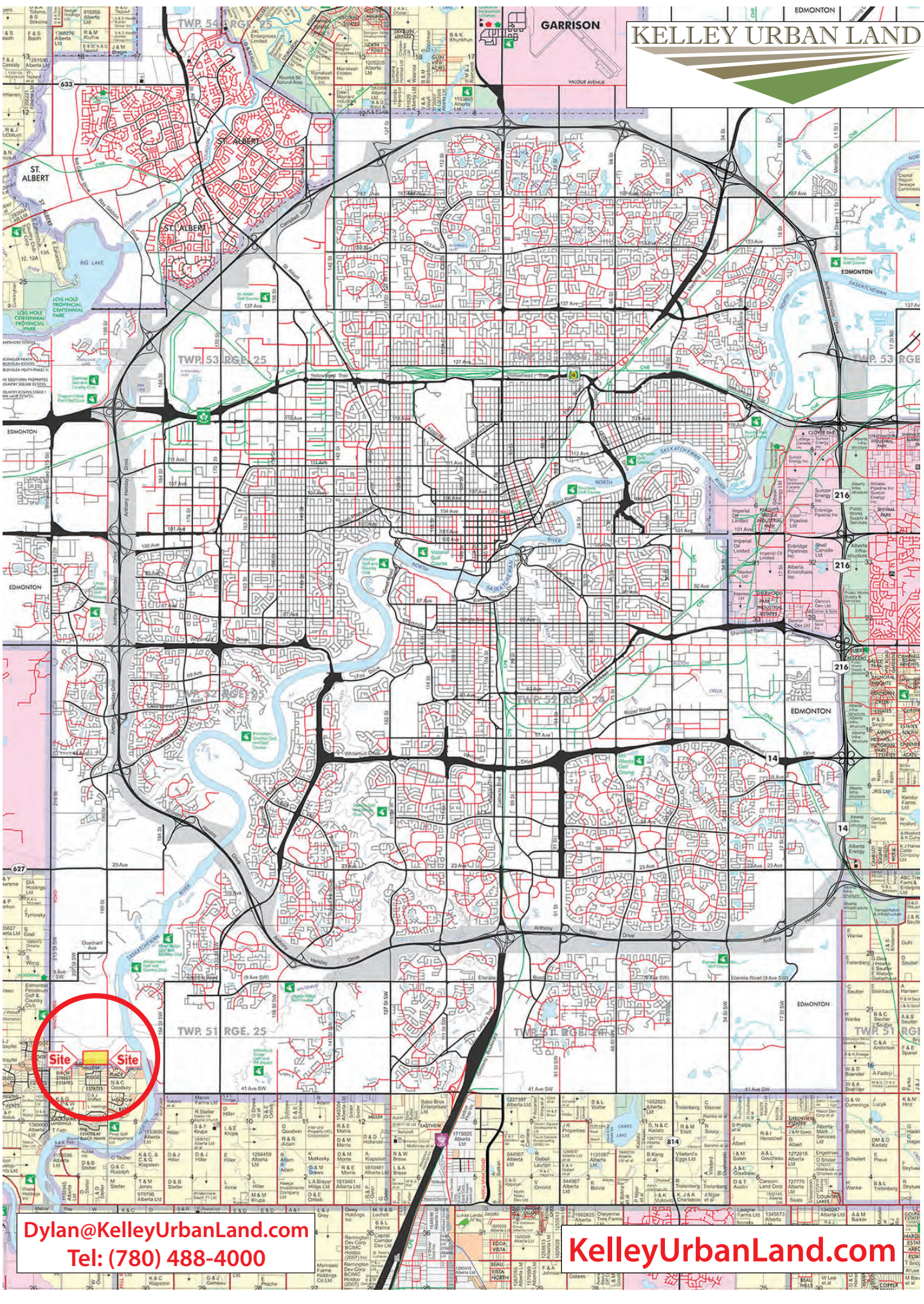
Riverview Area Structure Plan Amendment

April 13, 2015 - 1161 102460 KC

X:\1161\active\116102460\drawing\drmming\ASP_Amendment\ASP_Amendment_Land_UrbanView_ASP_1_13_2015.dwg
 2015/04/13 9:25 AM by: C:\mscibk\bin



Dylan@KelleyUrbanLand.com
Tel: (780) 488-4000



Site Site

Dylan@KelleyUrbanLand.com
Tel: (780) 488-4000

KelleyUrbanLand.com