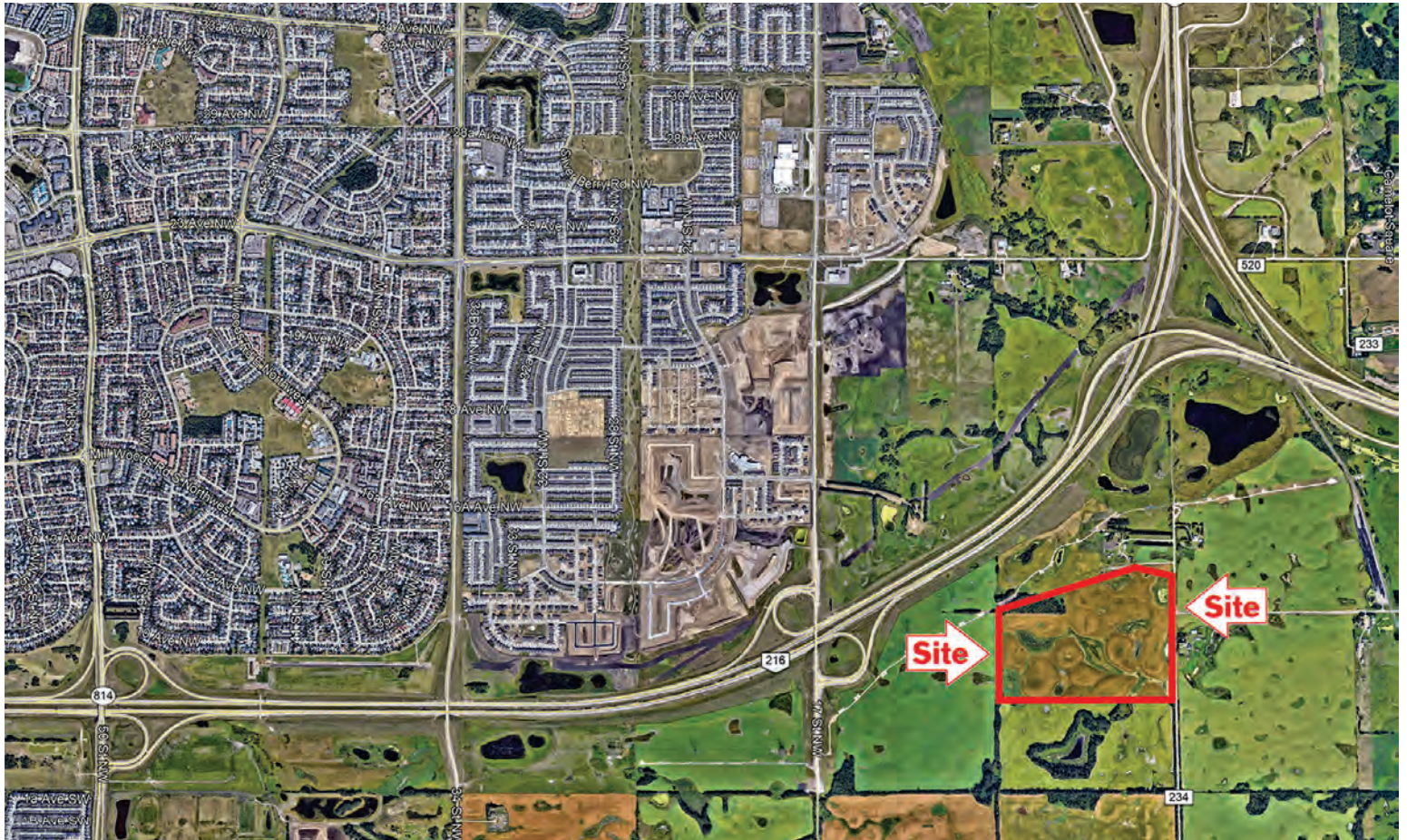


ELLERSLIE EAST

107.10 Acres SE Edmonton



107.10 Acres ... South East Edmonton

© 2012 Keller



ELLERSLIE EAST

Acres: 107.1 Acres

Price: \$6,750,000

Price/Acre: \$ 63,025/Acre

Features:

- *Neighborhood Structure Plan Approved !!*
- *South East Edmonton Shows Phenomenal Growth !*
- *Highly Desirable, Highly Sought after Destination for Builders, Developers and Home Buyers !!*
- *Conveniently Located on the Anthony Henday Ring Road !*



KELLEY URBAN LAND

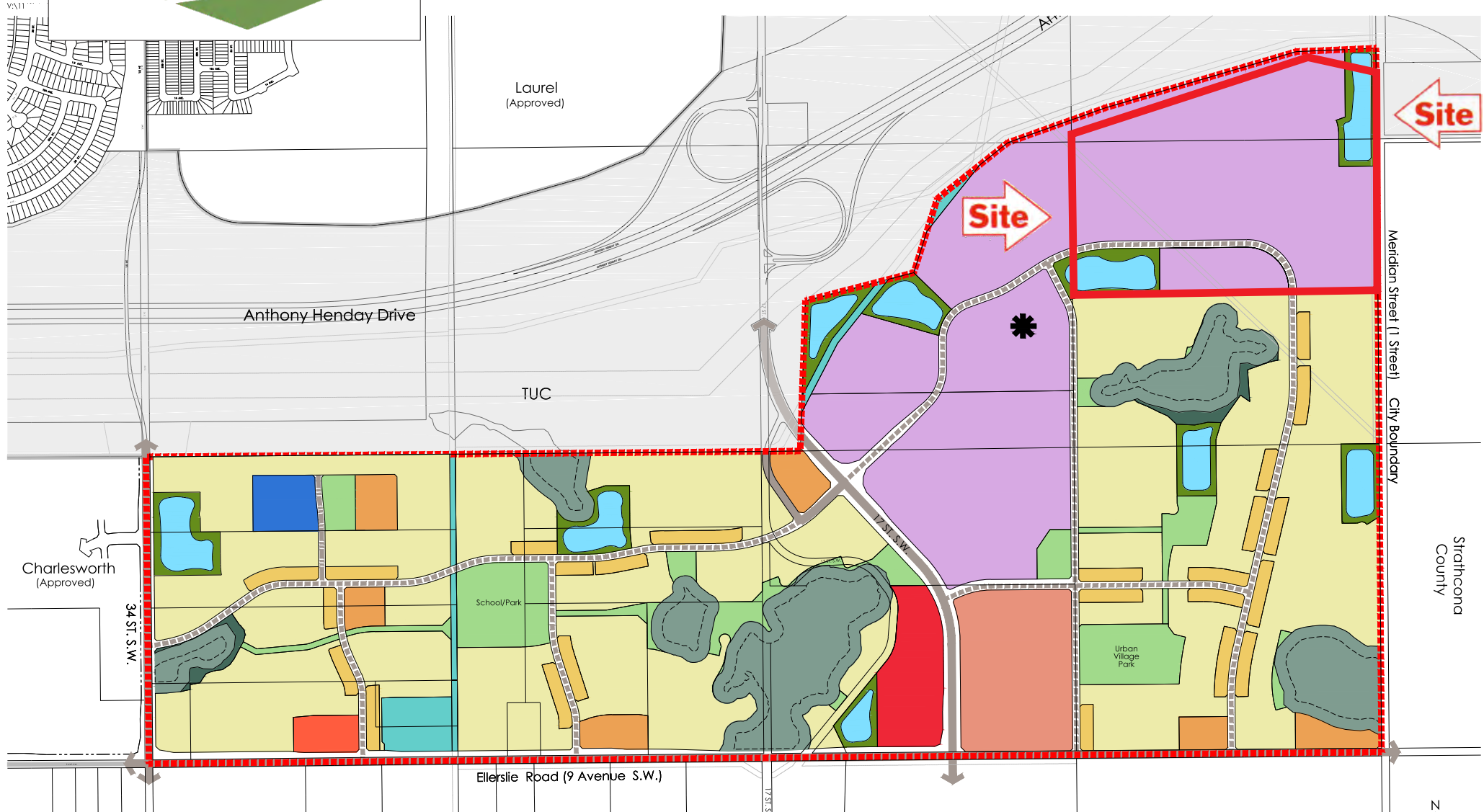


Dylan@KelleyUrbanLand.com
Tel: (780) 488-4000

KELLEY URBAN LAND



Dylan@KelleyUrbanLand.com
Tel: (780) 488-4000



- Legend
- NSP Boundary
 - Low Density Residential
 - Low Density Residential (Street-Oriented)
 - Business Employment
 - Medium Density Residential
 - Stormwater Management Facility
 - Commercial/Residential Mixed Use
 - Natural Area (ER)
 - Community Commercial
 - Institutional
 - Park / Linear Park
 - Public Utility
 - ★ Potential Future High School
 - Arterial Roadway
 - Collector Roadway
 - Enhanced Local Road

Site

Site

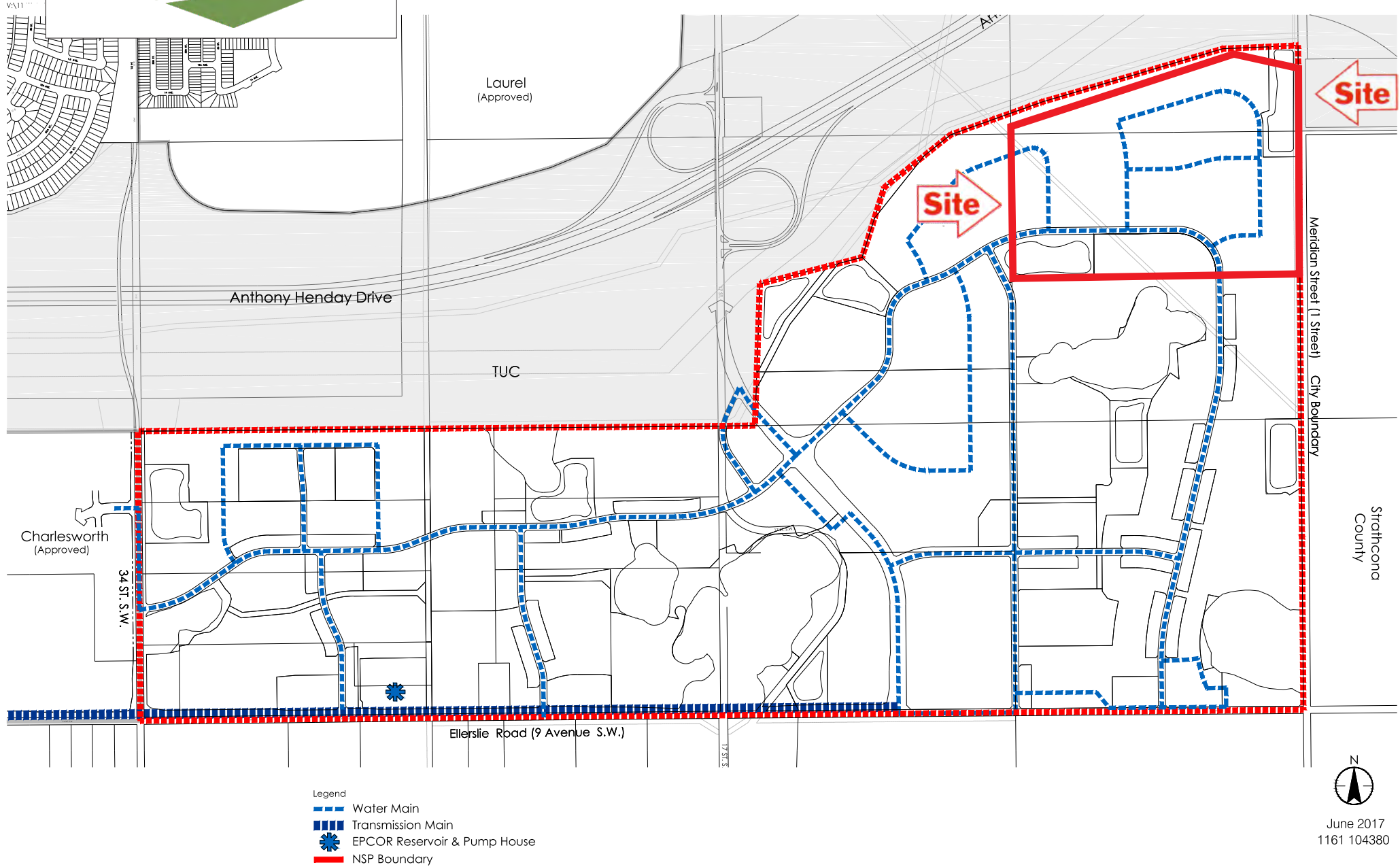


June 2017
1161 104380

Dylan@KelleyUrbanLand.com
Tel: (780) 488-4000

Figure 5

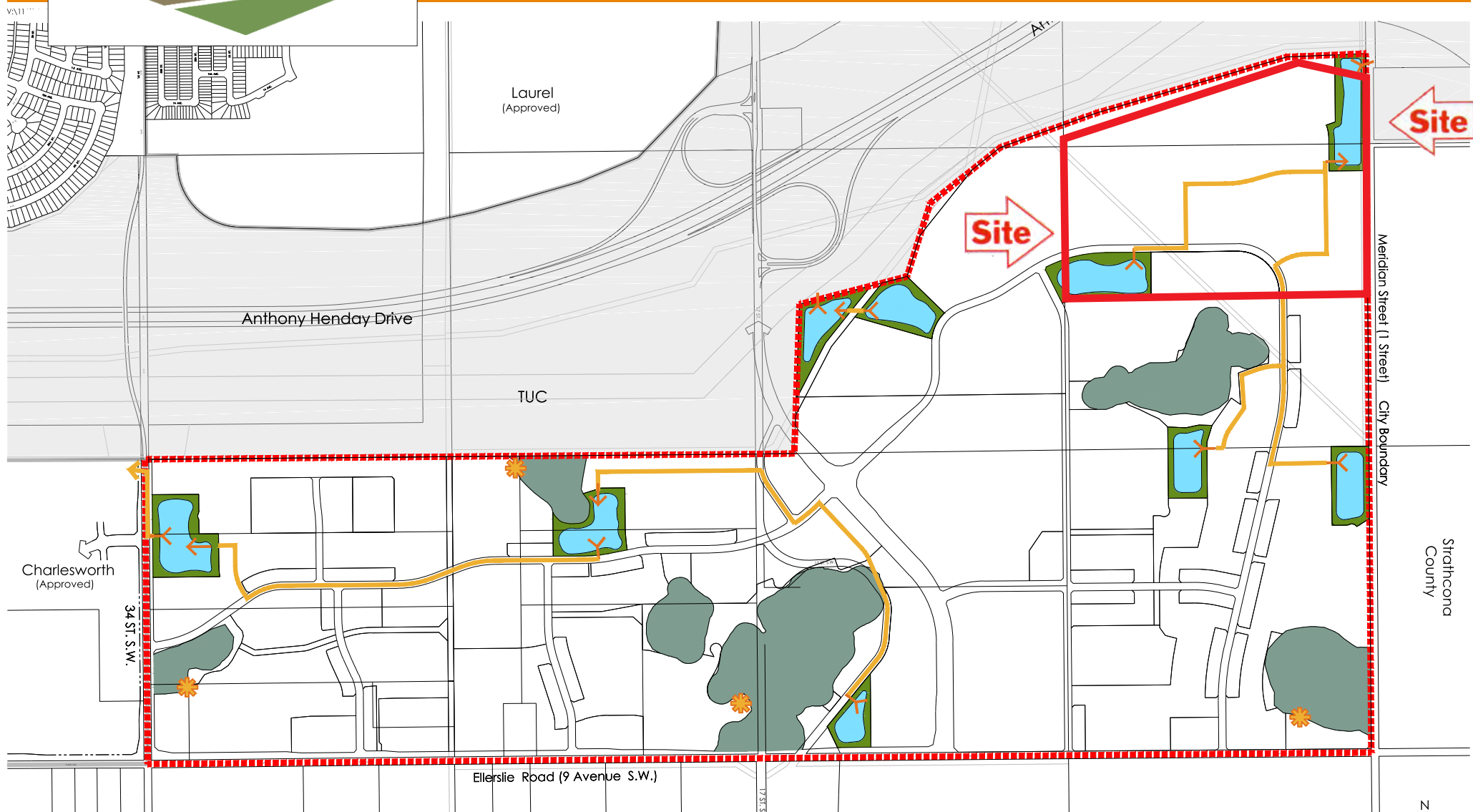
Land Use Concept



- Legend
- Water Main
 - Transmission Main
 - EPCOR Reservoir & Pump House
 - NSP Boundary



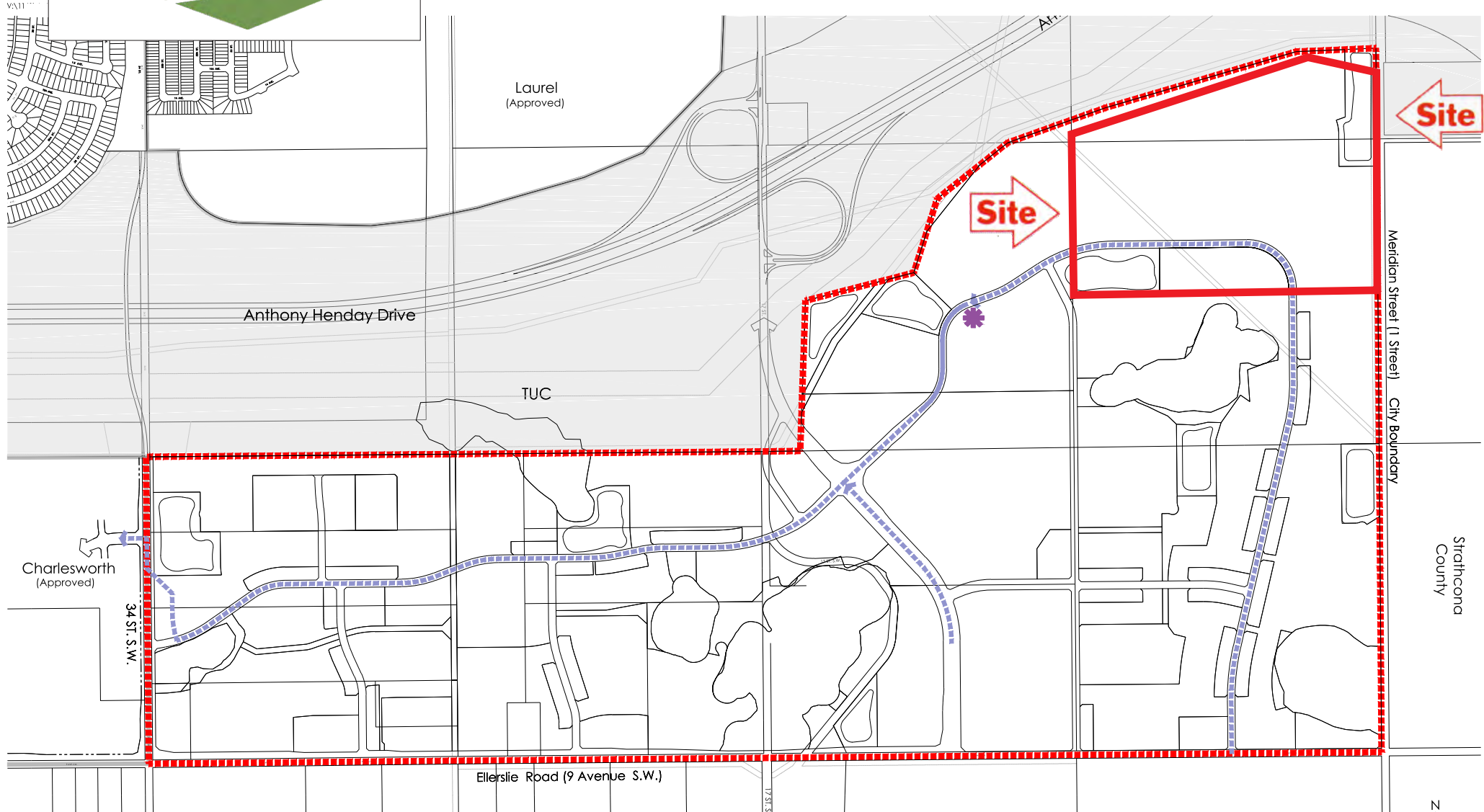
June 2017
1161 104380



- Legend
- Interconnecting Pipe
 - Outlet
 - Inlet
 - Forebay
 - NSP Boundary



June 2017
1161 104380

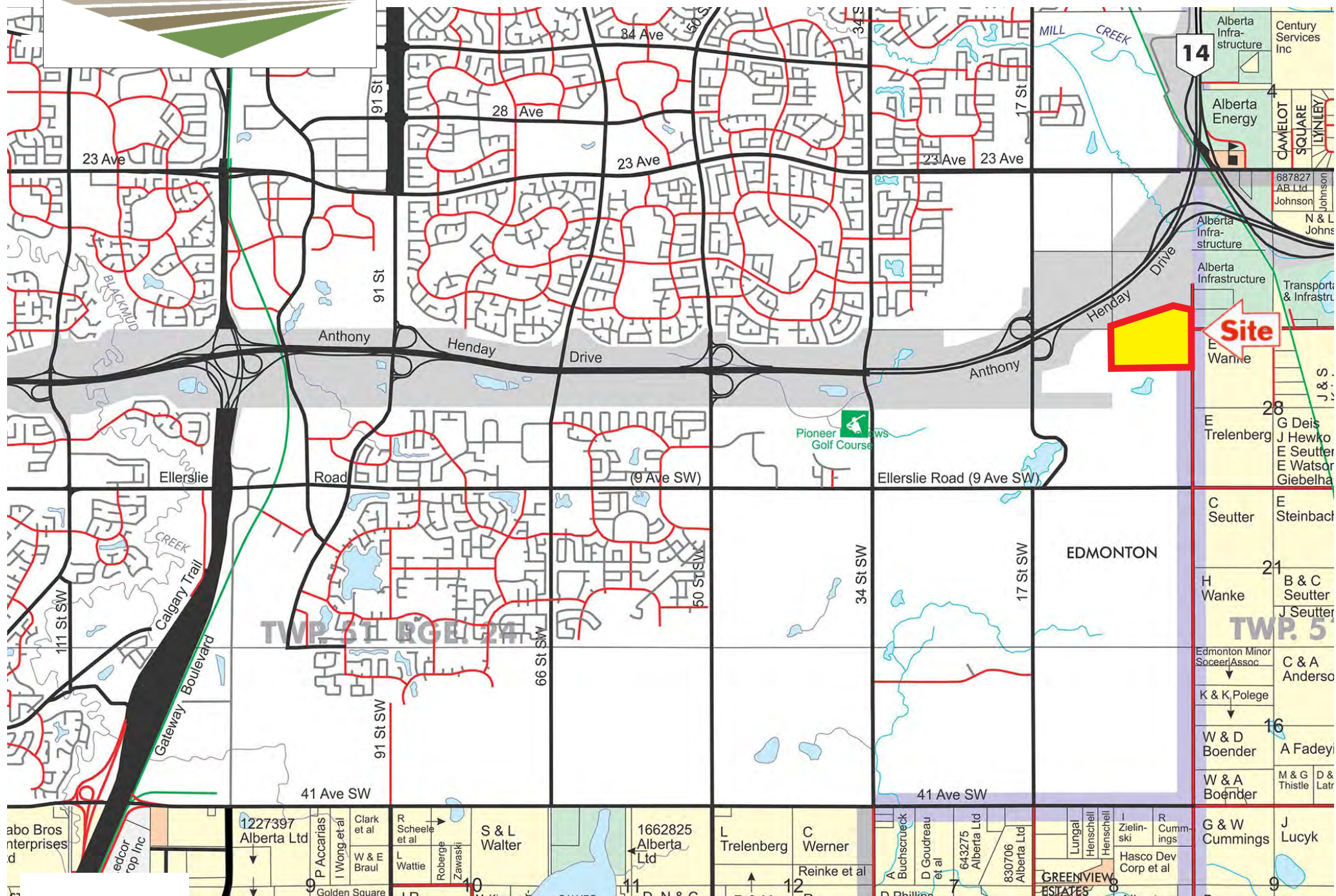


- Legend
- Sanitary Forcemain
 - Sanitary Trunk
 - Sanitary Pump Station
 - NSP Boundary



June 2017
1161 104380

KELLEY URBAN LAND



Dylan@KelleyUrbanLand.com
Tel: (780) 488-4000